



B145



Explorer Yacht



Launch, April 2022



Message from the CEO

Starting as a group of enthusiasts, Bering Yachts now is a large operation of passionate professionals. Like a family, we might disagree and argue, but we always remember our goal – give customers their best experience. Passion attracts people.

Owning a boat is a very emotional enterprise. One cannot stay unattached when crossing the deep blue sea. There are so many things to see, so much to experience! That is what we give to our customers – an ability to enjoy every moment of their thrilling rides in comfort and safety.

Alexey Mikhailov
President & CEO

A handwritten signature in blue ink, appearing to read 'Alexey', written in a cursive style.







General Description

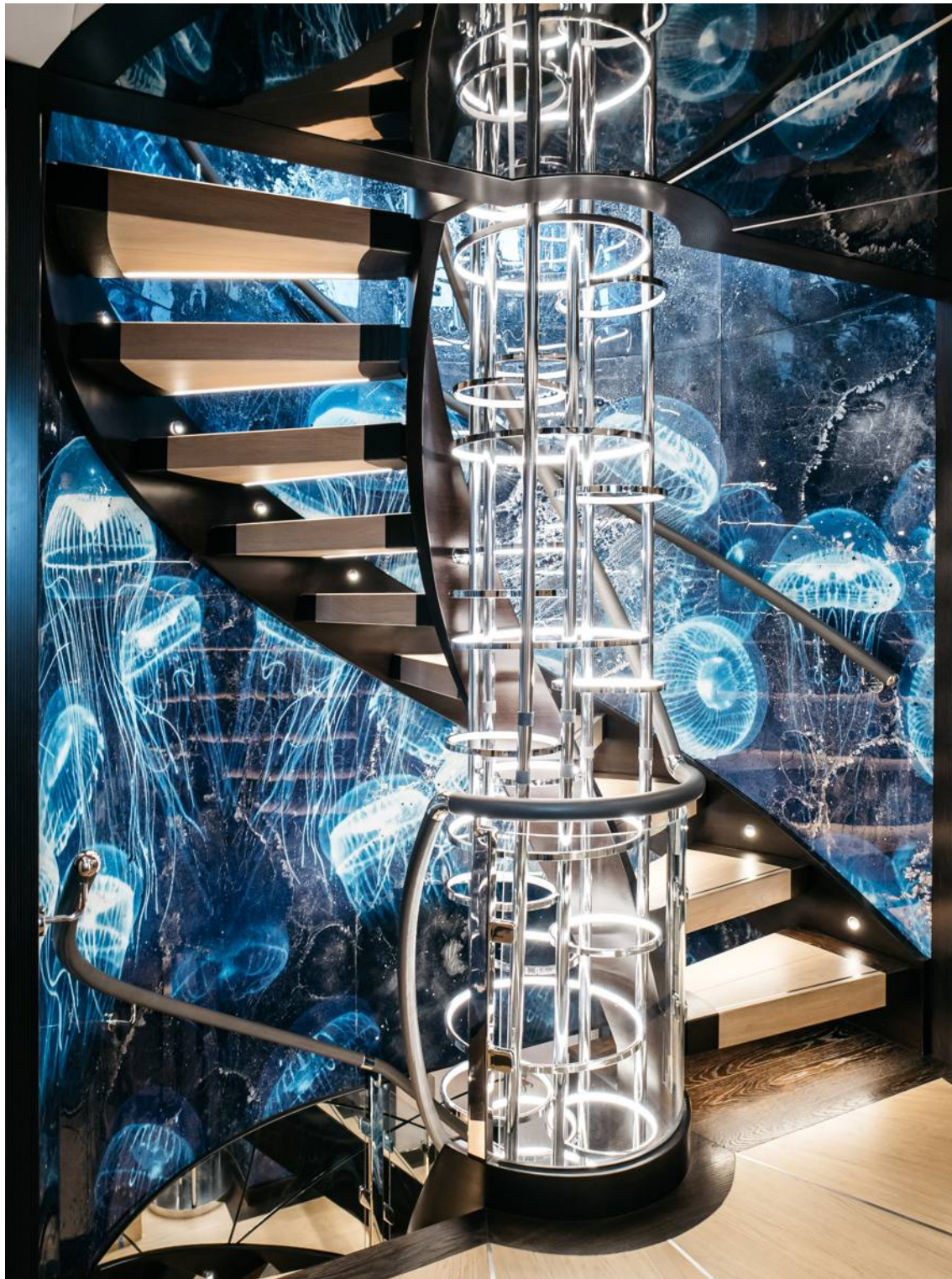
B 145 is about elegance and capacity. Outstanding 9.1-meter beam offers an abundance of space, and the distinct Bering style turns heads at any marina.

Designed by an in-house team of naval architects and engineers, this superyacht has a steel hull and an aluminum superstructure. 445 metric tons of displacement allow this oceangoing beauty to have almost 300 m² of interior space, 112 m² of crew accommodation, and 282 m² of technical areas.

With a fuel tank of 68,000 L, B145 can travel autonomously for more than 4,000 nm at cruise speed of 12 knots, with maximum reaching 15 knots. Vast storage and fridge capacity give 12 guests and 9 crew plenty of provision and supplies for long non-stop trips.







Interiors

Full displacement and a wide beam allow making living quarters impressively large. The master stateroom, located on the main deck toward the bow, has glass windows measuring more than 9.5 square meters. Additionally, there are 5 comfortable guest rooms. 4 crew staterooms and the captain quarter provide convenient crew accommodation.

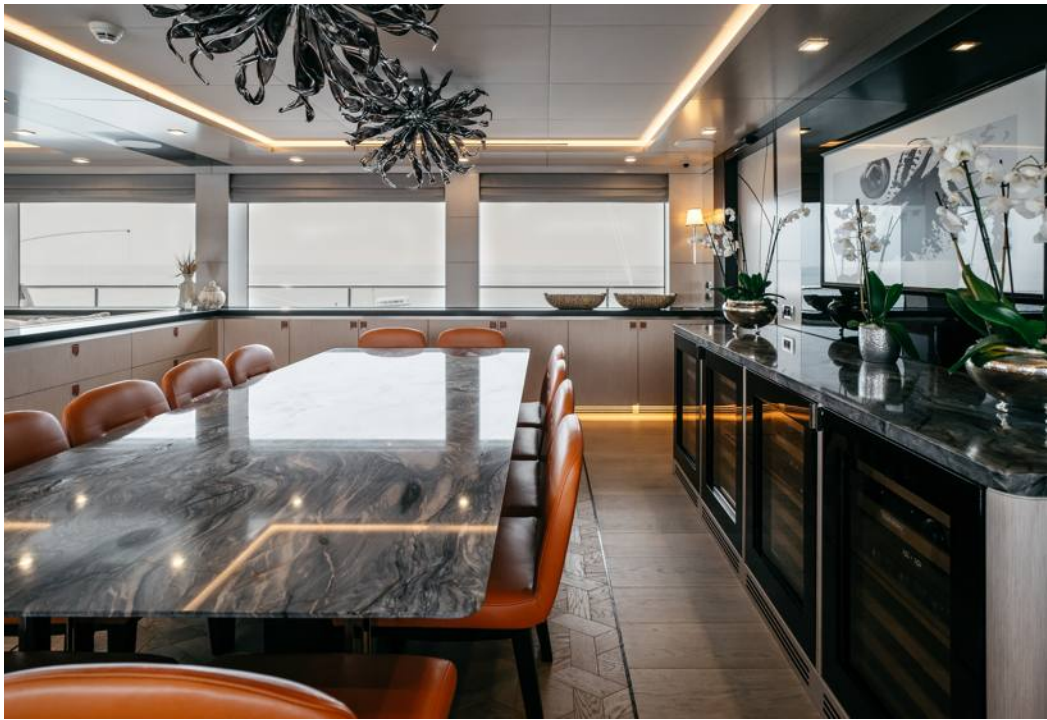
Spacious amenities feature very broad sidewalks. A huge saloon with a dining area for 12 persons and a lounge area are located on the main deck. Another dining table is on the upper deck. The flybridge features a SPA zone, a bar with a lift system, a gas grill, and an outdoor jacuzzi among luxurious amenities.

An expansive 30-square-meters garage is perfect for storing all the water toys, tenders, and diving equipment. Bering 145 also has a spacious beach club at the stern – a perfect space of 40 square meters for relaxing and entertaining.

B145 – You imagine the yacht of your dreams and we make her!



Main Saloon







Master Stateroom







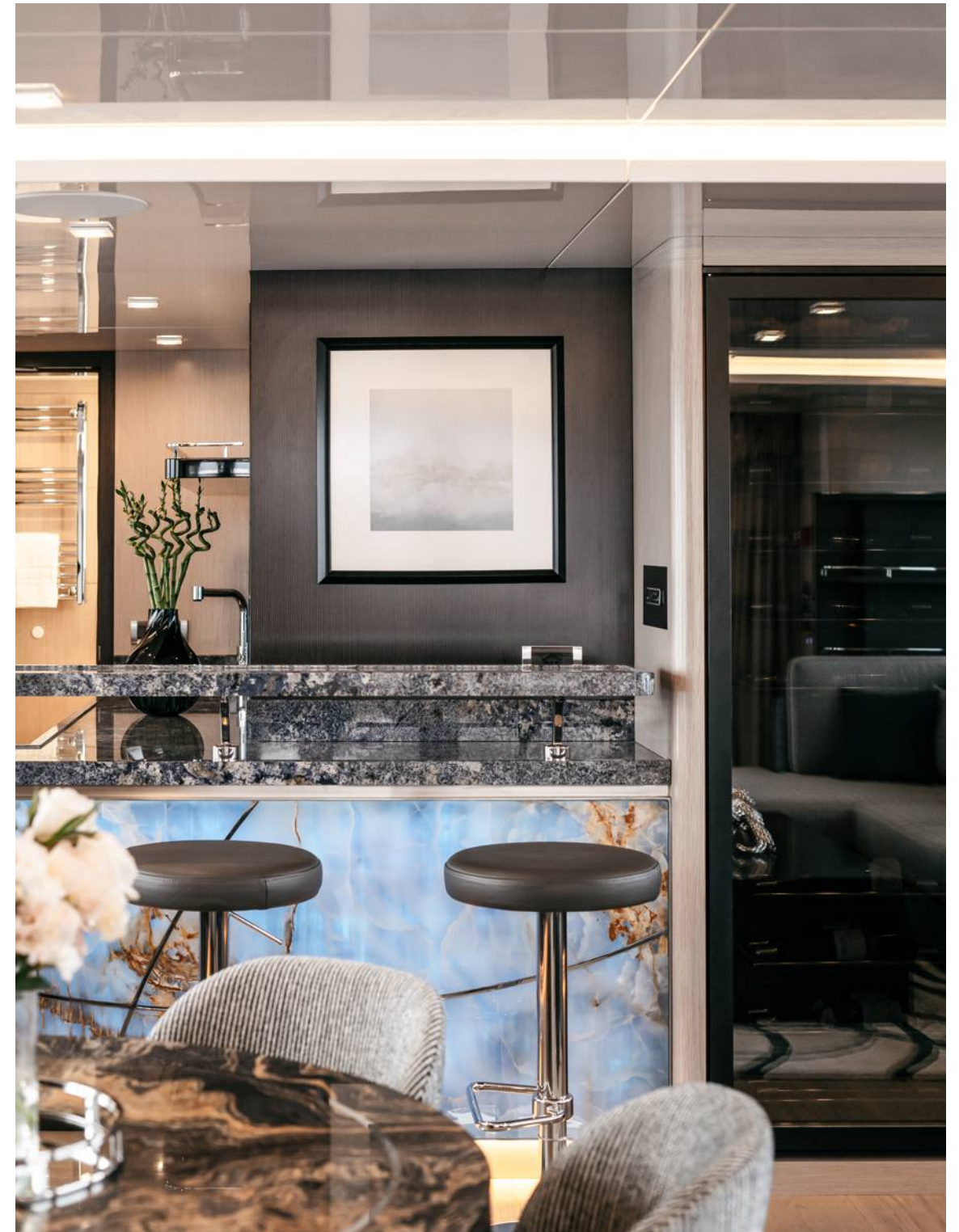


Guest staterooms





Skylounge









Exterior

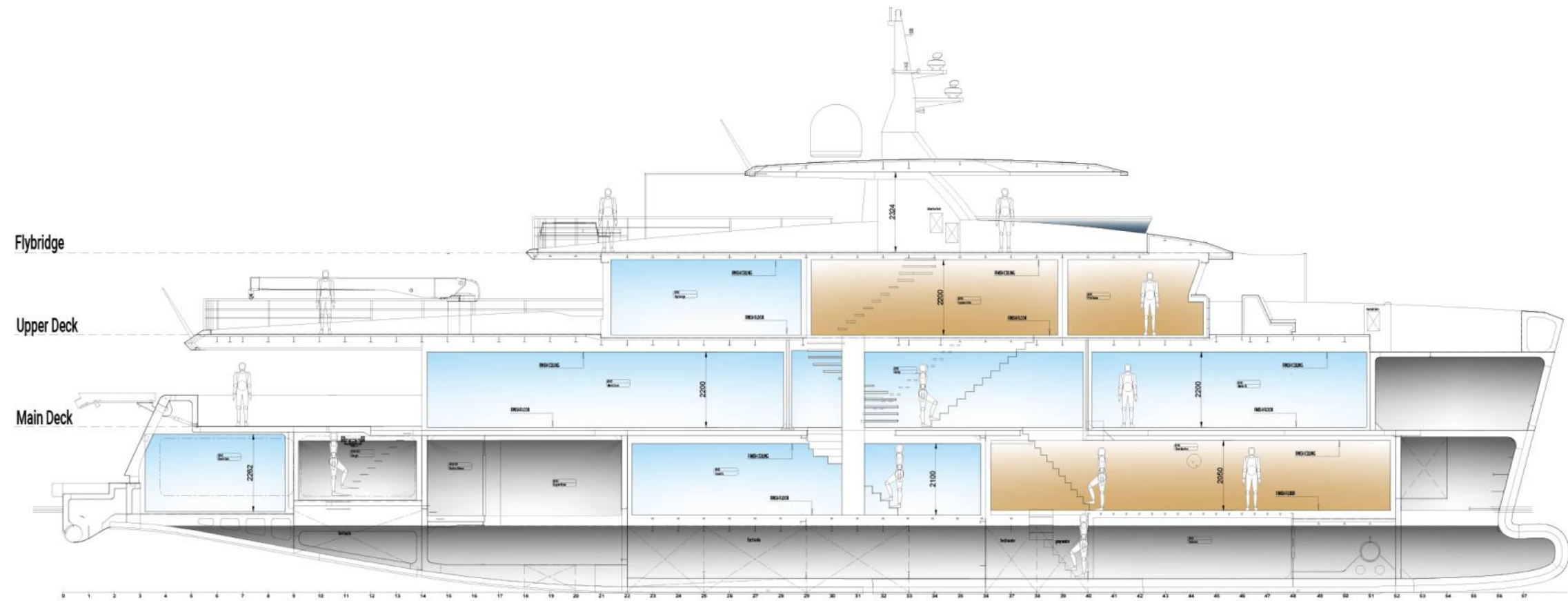


BRIEF SPECIFICATION

Length Overall (LOA)	44.20 m/145'
Length Waterline (LWL)	42.30 m/138'
Beam Overall	9.1 m/30'5"
Draft (with full fuel load)	2.5 m/8'2"
Displacement Full Load	445 metric tons
Gross Tonnage	499 GT
Fuel	68.000 L/17.963 gallons
Fresh Water	11.000 L/2.900 gallons
Grey Water	4.000 L/1.056 gallons
Black Water	4.000 L/1.056 gallons
Engines	2 CAT C-32 1200 BHP @ 1800-2100 RPM
Cruise Speed	12 knots
Maximum Speed	15 knots
Range at cruise speed	4.000+ nautical miles
Guest	12
Crew	9
Exterior Space	329.1 m2 / 3542 sq ft
Interior Space	299.1 m2 / 3219 sq ft
Crew Area	112.5 m2 / 1211 sq ft
Technical Area	282.5 m2 / 3041 sq ft







INTERIOR SPACE



CREW AREA



TECHNICAL AREA

Flybridge



Flybridge
92,6 m² / 997 sq ft

Upperdeck



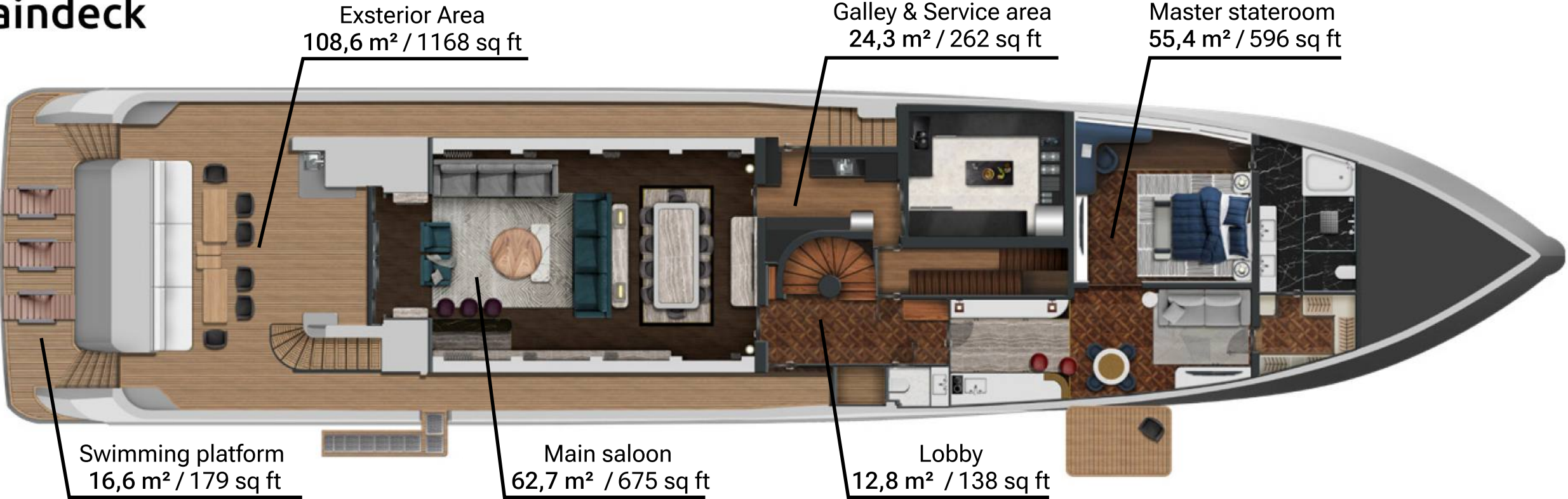
Exterior Area
140 m² / 1507 sq ft

Skylounge
38,5 m² / 414 sq ft

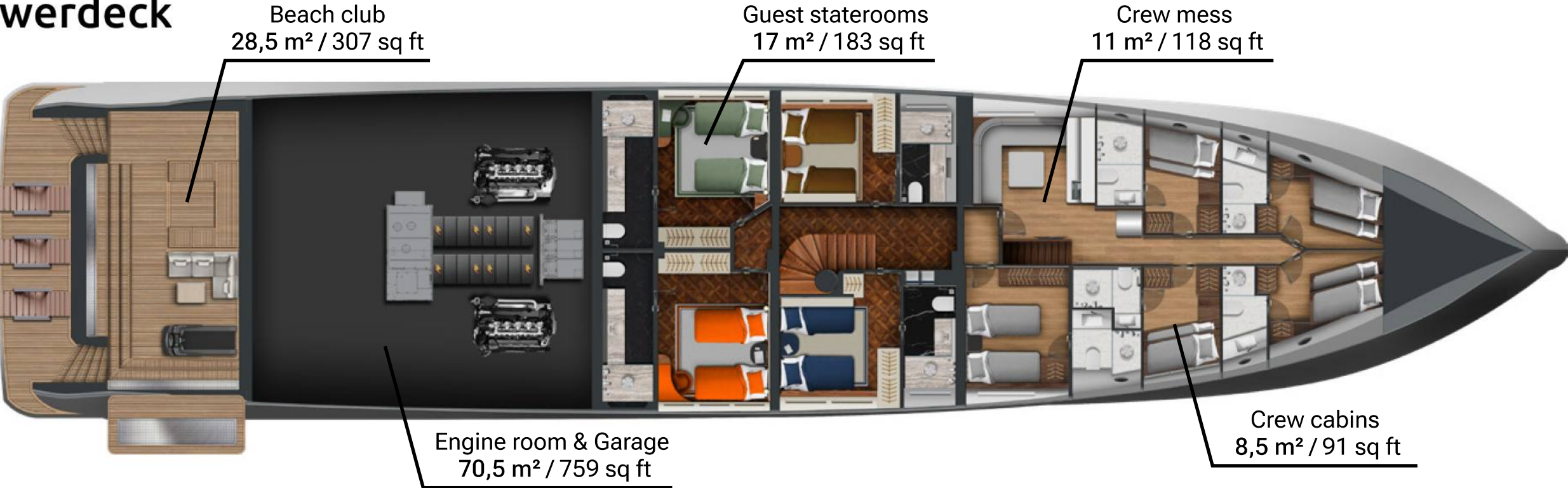
Captain Cabin
11,2 m² / 120 sq ft

Pilot House
17,3 m² / 186 sq ft

Maindeck



Lowerdeck





Bering Yachts in brief

Bering Yachts creates a new caliber of a vessel: recreational steel boat that provides an unequaled level of luxury, capability and safety. Taking design cues from proven oceangoing commercial trawlers, these yachts can cross any ocean comfortably, securely and with a minimal number of stops. We blend comfort and reliability to withstand any forces the nature can bring.

We are special. Being a full production cycle, we develop a concept, manufacture the boat in-house, and then equip it with our own luxury furniture. Bering Yachts satisfy even the most meticulous client, and our customer service truly is second to none.



Contact us

Bering shipyard

+90 539 826 7008
contact@beringyachts.com
Liman Free Trade Zone 07130,
Antalya, Turkey

Americas & the Caribbean

+1 919 523 4265
americas@beringyachts.com
3401 N Miami Ave,
Suite 224,
Miami, FL 33127

Europe

+49 1575 1553200
bogdan@beringyachts.com
27 Königsallee,
40212 Düsseldorf, Germany

Australia

+90 541 834 89 26
sales@beringyachts.com

Other regions

+1 305 797 8497
contact@beringyachts.com

VISIT OUR WEBSITE



®