

  
**BERING**  
YACHTS

**B 72**







## Message from the CEO

Starting as a group of enthusiasts, Bering Yachts now is a large operation of passionate professionals. Like a family, we might disagree and argue, but we always remember our goal – give customers their best experience. Passion attracts people.

Owning a boat is a very emotional enterprise. One cannot stay unattached when crossing the deep blue sea. There are so many things to see, so much to experience! That is what we give to our customers – an ability to enjoy every moment of their thrilling rides in comfort and safety.

**Alexey Mikhailov**  
President & CEO

A handwritten signature in blue ink, appearing to read 'Alexey', written in a cursive style.





## General Description

Bering 72 presents an advanced development of a very successful Bering 65 model, of which three hulls were built. While creating Bering 72, the Bering Yachts' in-house design team has collected feedback from the owners and captains of the 65 model after the boats navigated more than 100,000 miles in different climate and sea conditions.

Bering 72 has retained distinctive trawler's lines of her predecessor, but this is a completely new boat: larger, better equipped, with more supplies, and very well inhabited. Bering 72 is a true modern classic of the steel-hulled explorer yacht, perfect for long family expeditions as well as shorthanded sailing.





## Interiors

Bering 72 has a three-deck layout. The hard-topped teak-decked flybridge with helm station provides enough room for all guests to enjoy sunsets with meals cooked right here on the fully equipped galley.

The main deck features a saloon, galley, and isolated pilothouse on different levels. The saloon has a dinette with a built-in U-shaped settee to starboard. There is a huge 48-inch pullout TV panel to entertain the guests on the port side amidst two wine cabinets.

Moving forward, the full-width galley is just aft of the pilothouse. Visually separated from the saloon with stairs, the galley nevertheless keeps the whole bunch together even if some of the guests are fond of (or busy with?) cooking. The galley has abundant storage spaces and is well equipped with fridges, an electrical cooking top, oven, microwave, and trash compactor.

The boat deck is visually divided from the flybridge and can accommodate one big or two small tenders easily launched and recovered with a hydraulic crane.



Saloon













Master Stateroom





Flybridge

# BRIEF SPECIFICATION

|                             |                         |
|-----------------------------|-------------------------|
| Length Overall (LOA)        | 22.18 m / 72'6"         |
| Length Waterline (LWL)      | 20.57 m / 67'4"         |
| Beam Overall                | 6.45 m / 21'            |
| Draft (with full fuel load) | 1.87 m/ 6'              |
| Displacement Full Load      | 120 metric tons         |
| Gross Tonnage               | 120 gross tons          |
| Fuel                        | 24.000 L/ 6.340 gallons |
| Fresh Water                 | 2.855 L/ 754 gallons    |
| Grey Water                  | 2.380 L/ 628 gallons    |
| Black Water                 | 1.190 L/314 gallons     |
| Engines                     | 2 Cummins QSL 9 335 HP  |
| Cruise Speed                | 8 knots                 |
| Maximum Speed               | 10 knots                |
| Range at cruise speed       | 4.000+nautical miles    |
| Guest                       | 6                       |
| Crew                        | 2                       |

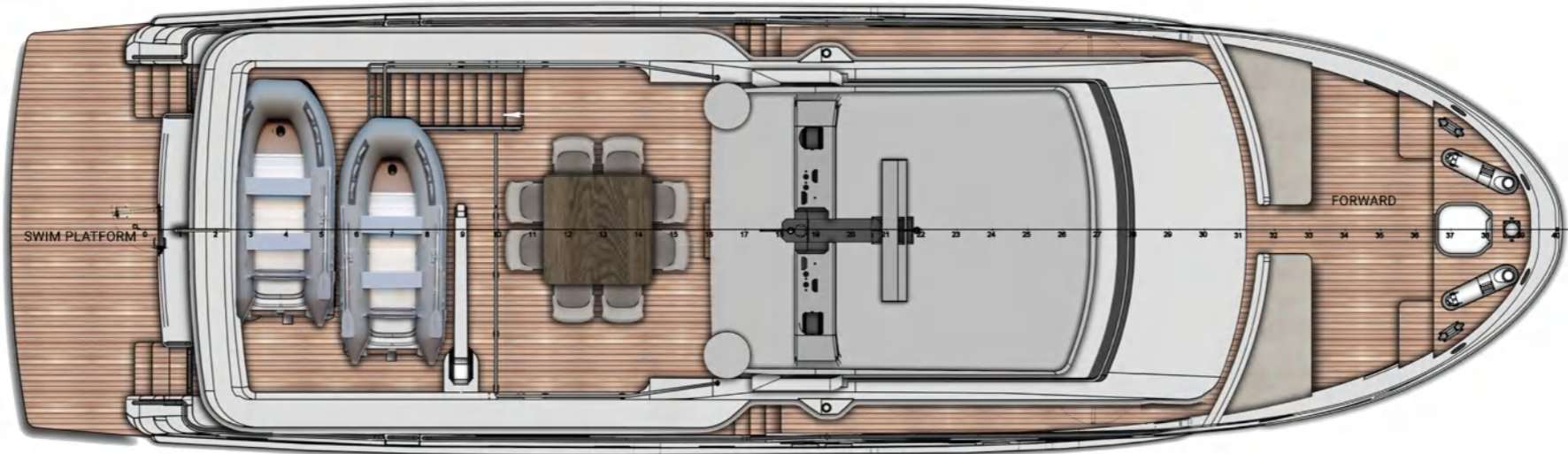




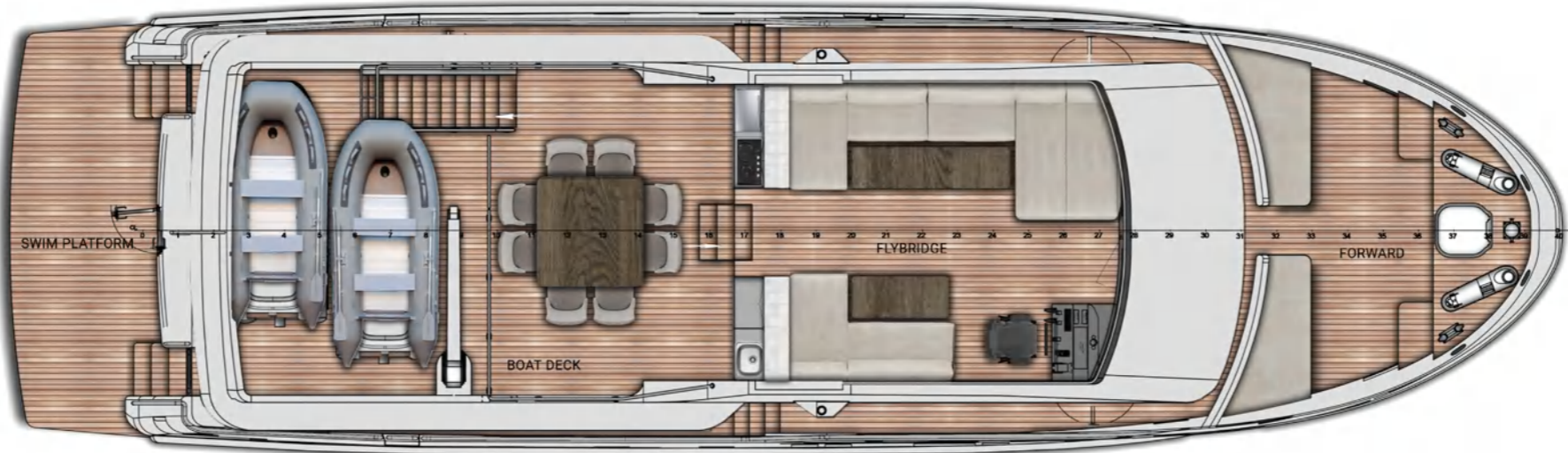


# Option 1: 3 Staterooms

Top view



Flybridge



# Main deck

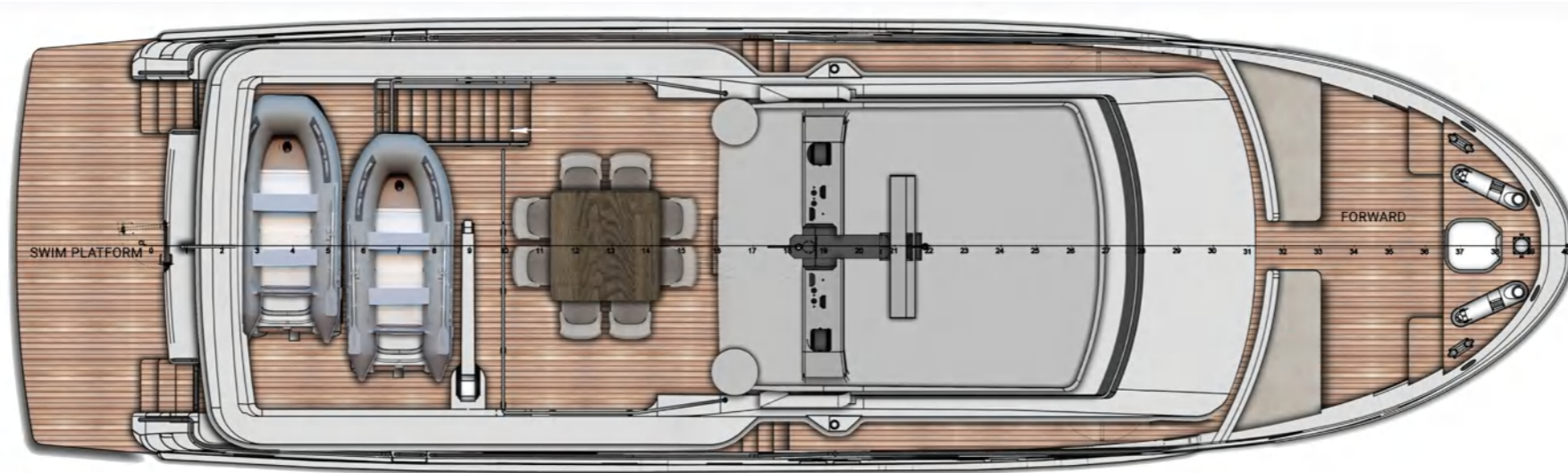


# Lower deck

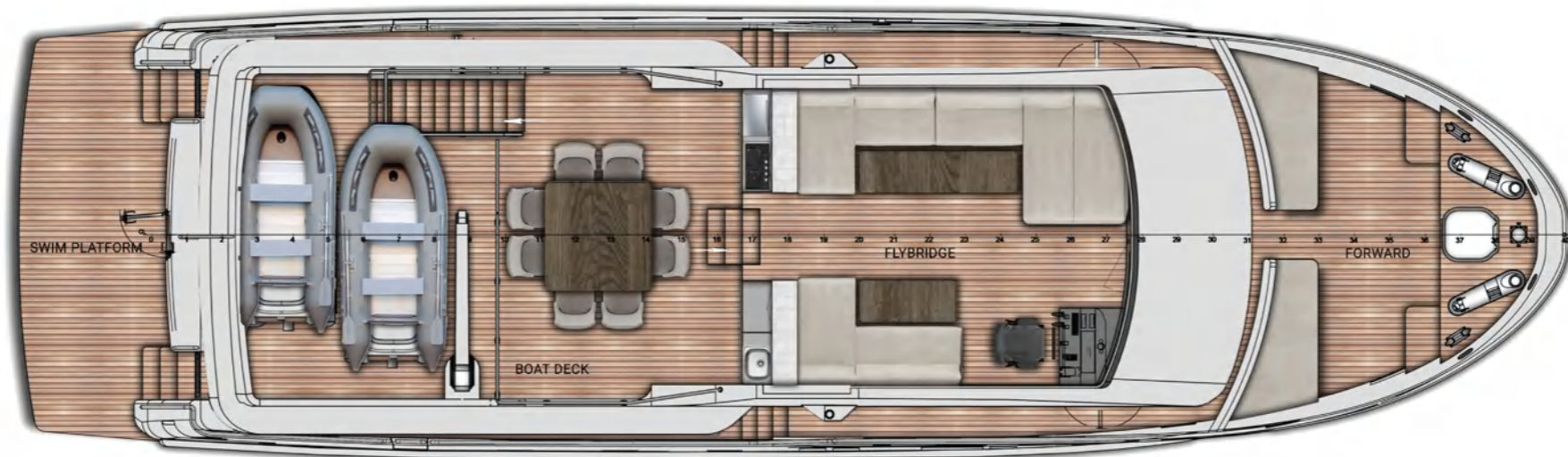


## Option 2: 4 Staterooms

Top view



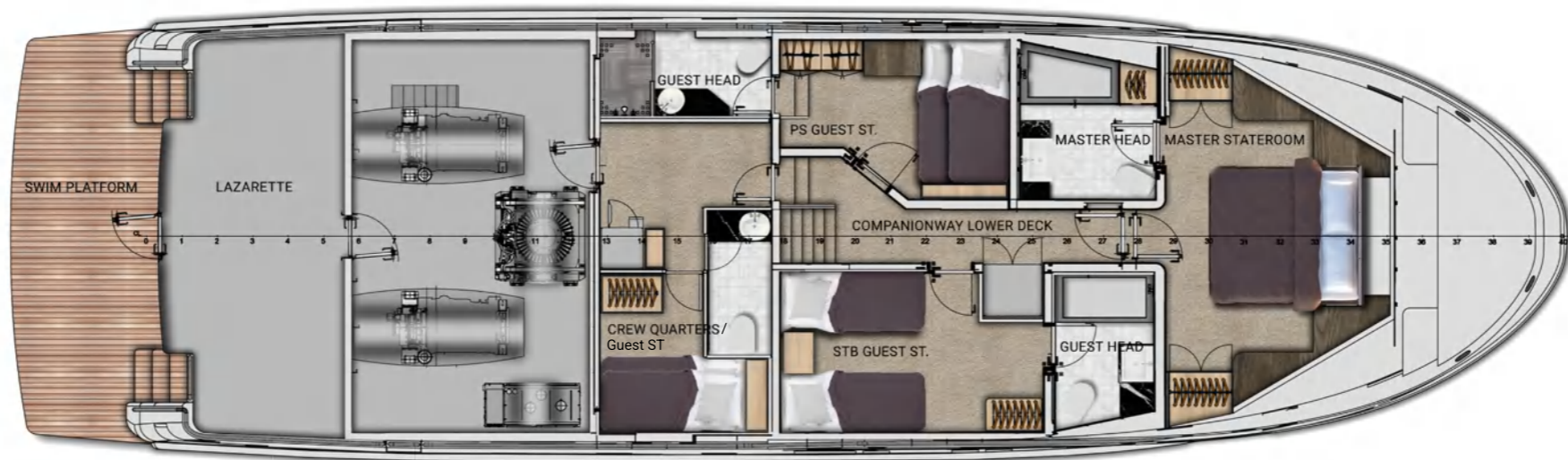
Flybridge



# Main deck



# Lower deck



## Bering Yachts in brief

Bering Yachts creates a new caliber of a vessel: recreational steel boat that provides an unequalled level of luxury, capability and safety. Taking design cues from proven oceangoing commercial trawlers, these yachts can cross any ocean comfortably, securely and with a minimal number of stops. We blend comfort and reliability to withstand any forces the nature can bring.

We are special. Being a full production cycle, we develop a concept, manufacture the boat in-house, and then equip it with our own luxury furniture. Bering Yachts satisfy even the most meticulous client, and our customer service truly is second to none.



## Contact us

### Bering shipyard

+90 539 826 7008  
contact@beringyachts.com  
Liman Free Trade Zone 07130,  
Antalya, Turkey

### Americas & the Caribbean

+1 919 523 4265  
americas@beringyachts.com  
3401 N Miami Ave,  
Suite 224,  
Miami, FL 33127

### Europe

+49 1575 1553200  
bogdan@beringyachts.com  
27 Königsallee,  
40212 Düsseldorf, Germany

### Australia

+90 541 834 89 26  
sales@beringyachts.com

### Other regions

+1 305 797 8497  
contact@beringyachts.com

VISIT OUR WEBSITE





®