

  
**BERING**  
YACHTS

**B77**





VERONIKA

77



## Message from the CEO

Starting as a group of enthusiasts, Bering Yachts now is a large operation of passionate professionals. Like a family, we might disagree and argue, but we always remember our goal – give customers their best experience. Passion attracts people.

Owning a boat is a very emotional enterprise. One cannot stay unattached when crossing the deep blue sea. There are so many things to see, so much to experience! That is what we give to our customers – an ability to enjoy every moment of their thrilling rides in comfort and safety.

**Alexey Mikhailov**  
President & CEO

A handwritten signature in blue ink, appearing to read 'Alexey', written in a cursive style.



VERONIKA



## General Description

Bering 77 is a very athletic and graceful long-range motor yacht. Relying on the experience and lessons learned from all previous models, Bering 77 has one on-deck departure.

Bering 77 displaces 364,000 lbs (165 mt) and shares the bulbous bow, hard-chined hull sides, and twin gondola skeg underbody of her sister's ships. Her bow is very high off the water and prominently features two large pocket anchors tucked into the gorgeous stainless steel backing grill.

Bering 77 has a range of over 4,000 miles at a cruising speed of 8 knots and can travel continuously for several weeks nonstop – letting her crew enjoy the journey while crossing the seas.



## Interiors

Aloft Bering 77 features a full-beam flybridge great for entertaining with a solid hardtop that easily flows aft to a large boat deck for tender and crane storage. On the main deck level, the side decks run bow to stern on both sides.

The raised cockpit aft includes an outside seating area. The saloon has a built-in outboard seating and a large dining table.

Going up a few steps, you arrive at the galley, from where you can go into the pilothouse. The large interior volume lets each owner select the number of cabins and how they are laid out in a wide variety of choices.

The engine room is imposing with stacked generators and twin Cummins engines in the deep gondola skegs.

There is a large sea chest forward on the centerline and the access capacity for servicing machinery is impressive.





Saloon









Master Stateroom







Guest Stateroom



# BRIEF SPECIFICATION

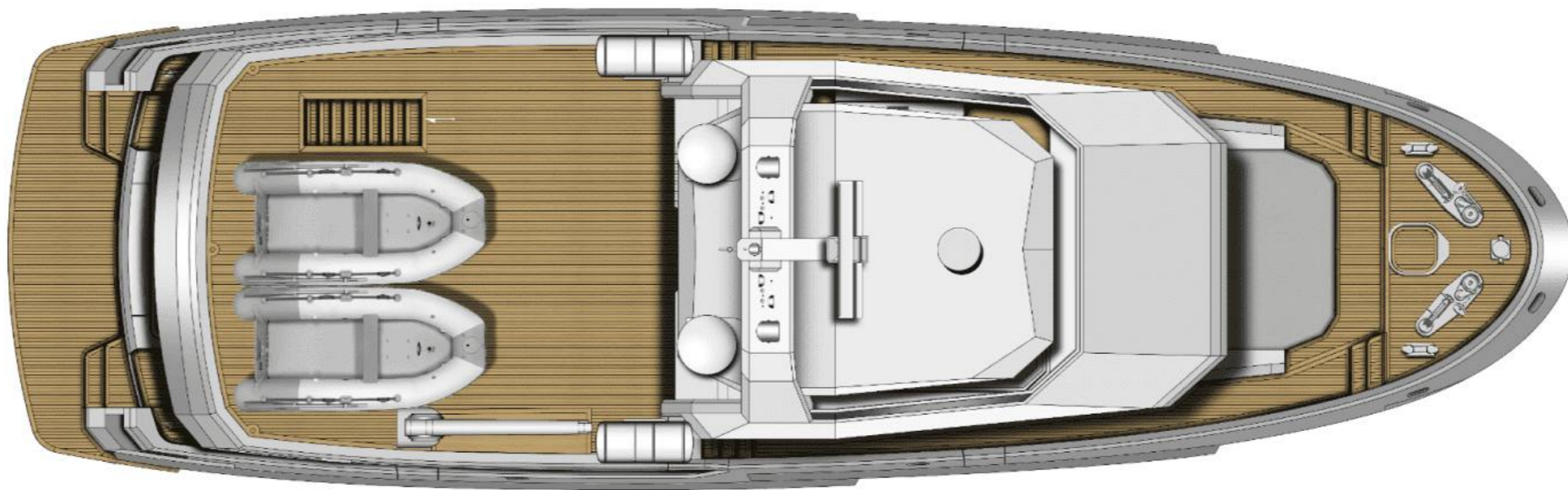
Length Overall (LOA)	23.95 m / 78'7"
Length Waterline (LWL)	22.08 m / 72'4"
Beam Overall	7.3 m / 24'
Draft (with full fuel load)	1.9 m/ 6'2"
Displacement Full Load	165 metric tons
Gross Tonnage	198 gross tons
Fuel	26.620 L/ 7.040 gallons
Fresh Water	4.400 L/ 1.160 gallons
Grey Water	1.890 L/ 500 gallons
Black Water	1.890 L /500 gallons
Engines	2 Cummins QSM11- 355 HP
Cruise Speed	8 knots
Maximum Speed	11 knots
Range at cruise speed	4.000+nautical miles
Guest	6
Crew	4



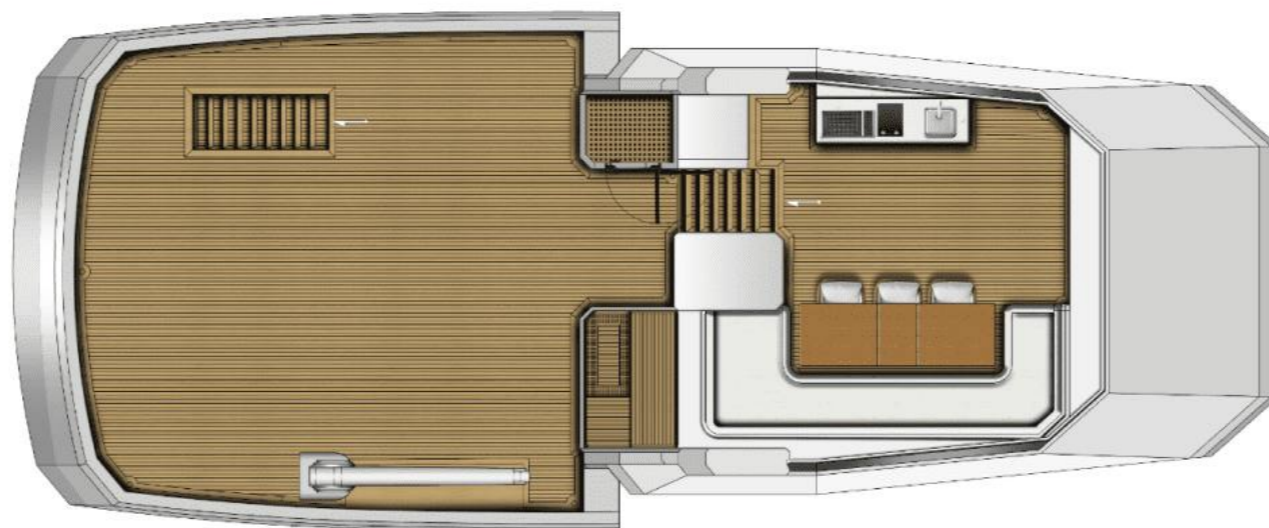




Top view



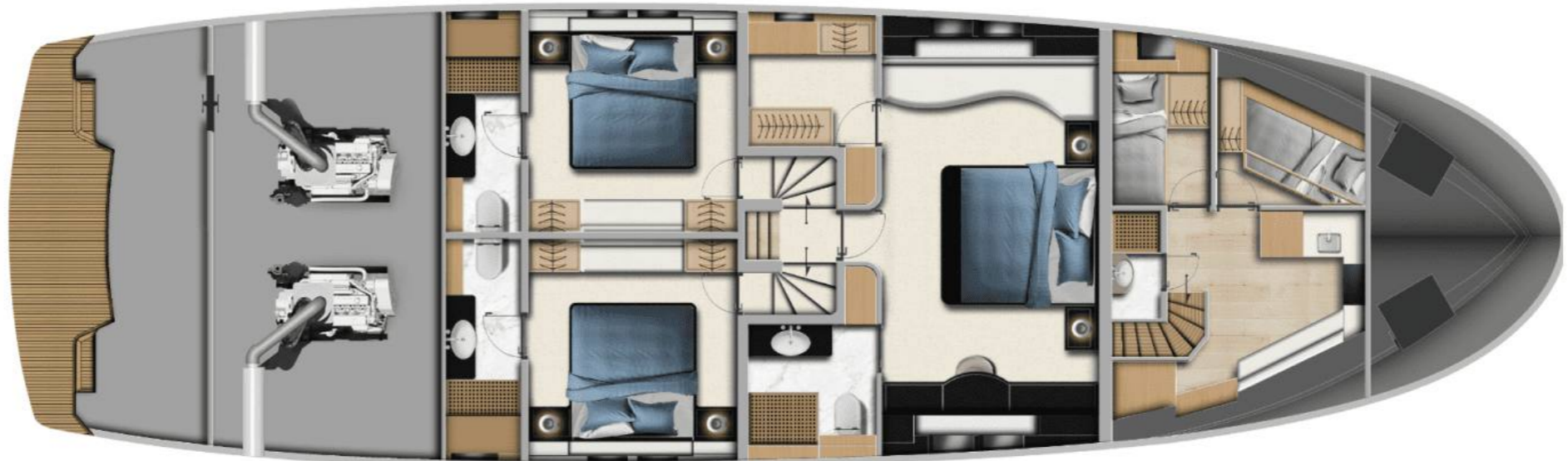
Flybridge



Main deck



Lower deck



## Bering Yachts in brief

Bering Yachts creates a new caliber of a vessel: recreational steel boat that provides an unequalled level of luxury, capability and safety. Taking design cues from proven oceangoing commercial trawlers, these yachts can cross any ocean comfortably, securely and with a minimal number of stops. We blend comfort and reliability to withstand any forces the nature can bring.

We are special. Being a full production cycle, we develop a concept, manufacture the boat in-house, and then equip it with our own luxury furniture. Bering Yachts satisfy even the most meticulous client, and our customer service truly is second to none.



## Contact us

### **Bering shipyard**

+90 539 826 7008  
contact@beringyachts.com  
Liman Free Trade Zone 07130,  
Antalya, Turkey

### **Americas & the Caribbean**

+1 919 523 4265  
americas@beringyachts.com  
3401 N Miami Ave,  
Suite 224,  
Miami, FL 33127

### **Europe**

+49 1575 1553200  
bogdan@beringyachts.com  
27 Königsallee,  
40212 Düsseldorf, Germany

### **Australia**

+90 541 834 89 26  
sales@beringyachts.com

### **Other regions**

+1 305 797 8497  
contact@beringyachts.com

VISIT OUR WEBSITE

